

componenti e profili / components and profiles

componenti e profili alluminio aluminium components and profiles



alu wood



carbon



white



titanium

profili stecche rib profiles



alu wood



carbon



white



titanium

profili stecche rib profiles



cover bag



canalina-raingutter

kit led



descrizione/description		astro
- luce bianca - con collegamento elettrico	- remote control - luce dimmerabile	kit.led.gx.w.c. 3000k
- white light - electrical connection	- remote control - dimmable light	
- luce bianca - kit batteria	- remote control - luce dimmerabile	kit.led.gx.w.c. 3000k
- white light - battery kit	- remote control - dimmable light	

basi standard telescopiche / standard telescopic bases



bt45 - bt55 - bt65

tubo in acciaio zincato - doppio galletto - viteria inclusa
steel zincated tube - double wing nut - screws included

	COD				KG
-	BT45	42 mm	45 mm	36 - 40 mm	1
-	BT55	52 mm	55 mm	47 - 50 mm	
-	BT65	62 mm	65 mm	55 - 60 mm	

btt45 - btt55 - btt65

tubo acciaio per fissaggio a terra - eventualmente da abbinare all'articolo btc
steel tube for ground fixing - possibility to combine it with art btc.



	COD				KG
-	BTT55	52 mm	55 mm	47 - 50 mm	1
-	BTT65	62 mm	65 mm	55 - 60 mm	

btc

supporto da interrare - da abbinare a BTT55 e BTT65
support for ground fixing - to combine with BTT55 and BTT65



	COD	KG
120x120x160 cm	BTC	1,5

bf6565d - bf6666d

base in acciaio colore antracite - tubo incl.
steel base colour antracite grey - tube incl.



	COD				KG
650x650x15 mm	BF6565D/T45	42 mm	45 mm	36 - 40 mm	35
	BF6565D/T55	52 mm	55 mm	47 - 50 mm	35
	BF6565D/T65	62 mm	65 mm	55 - 60 mm	35
650x650x25 mm	BF6666D/T45	42 mm	45 mm	36 - 40 mm	70
	BF6666D/T55	52 mm	55 mm	47 - 50 mm	70
	BF6666D/T65	62 mm	65 mm	55 - 60 mm	70

bf6565z - bf6666z

base in acciaio zincato - tubo incl.
zincated steel base - tube incl.



	COD				KG
650x650x15 mm	BF6565Z/T45	42 mm	45 mm	36 - 40 mm	35
	BF6565Z/T55	52 mm	55 mm	47 - 50 mm	35
	BF6565Z/T65	62 mm	65 mm	55 - 60 mm	35
650x650x25 mm	BF6666Z/T45	42 mm	45 mm	36 - 40 mm	70
	BF6666Z/T55	52 mm	55 mm	47 - 50 mm	70
	BF6666Z/T65	62 mm	65 mm	55 - 60 mm	70

bud8080d - bud8080w

base a croce metallica verniciata dark o starwhite
cross metal base epoxy coated dark or starwhite



	COD				KG
850x850 mm	BUD8080D/T55	52 mm	55 mm	47 - 50 mm	32
	BUD8080D/T65	62 mm	65 mm	55 - 60 mm	32
	BUD8080W/T55	52 mm	55 mm	47 - 50 mm	32
	BUD8080W/T65	62 mm	65 mm	55 - 60 mm	32

basi / bases

zavorre / ballast



bc35a4

base in cemento graniglia - disponibile con tubo bt45, bt55, bt65 tubo incluso.
cement grit base - available with tube bt45, bt55, bt65. tube incl.

	COD				KG
Ø 540 mm	BC35A4/T45	42 mm	45 mm	36 - 40 mm	35
	BC35A4/T55	52 mm	55 mm	47 - 50 mm	
	BC35A4/T65	62 mm	65 mm	55 - 60 mm	



bc55ma4 - bc80ma4

base in cemento graniglia - disponibile con tubo bt45, bt55, bt65. tubo incluso
cement grit base - available with tube bt45, bt55, bt65. tube incl.

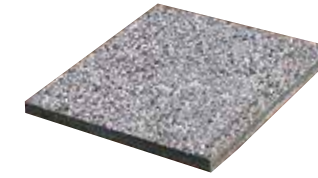
	COD				KG
Ø 600 mm	BC55MA4/T45	42 mm	45 mm	36 - 40 mm	55
	BC55MA4/T55	52 mm	55 mm	47 - 50 mm	
	BC55MA4/T65	62 mm	65 mm	55 - 60 mm	
Ø 640 mm	BC80MA4/T45	42 mm	45 mm	36 - 40 mm	80
	BC80MA4/T55	52 mm	55 mm	47 - 50 mm	
	BC80MA4/T65	62 mm	65 mm	55 - 60 mm	



bc5151gra4

piastra in cemento grigio con maniglie - disponibile con tubo bt45, bt55, bt65. tubo incluso.
concrete grey cement slab with handles - available with tube bt45, bt55, bt65. tube incl.

	COD				KG
500 x 500 mm	BC5151GRA4/T45	42 mm	45 mm	36 - 40 mm	60
	BC5151GRA4/T55	52 mm	55 mm	47 - 50 mm	
	BC5151GRA4/T65	62 mm	65 mm	55 - 60 mm	



bc4040 - bc5050

piastra in cemento e graniglia - spessore 4cm
cement grit slab - thickness 4cm

	COD	KG
400x400 mm	BC4040	14
500x500 mm	BC5050	20



bc5151

piastra in cemento e graniglia con maniglie - spessore 11cm. per ombrelloni a braccio
cement grit slab with handles - thickness 11cm. for cantilever parasols

	COD	KG
500x500 mm	BC5151	60



bc5151g

piastra in cemento grigio con maniglie - spessore 11cm. per ombrelloni a braccio
concrete grey cement slab with handles - thickness 11cm. for cantilever parasols

	COD	KG
500x500 mm	BC5151G	60



bv5050g

vaso in cemento grigio con maniglie - per ombrelloni a braccio
concrete grey cement pot with handles - for cantilever parasols

	COD	H	KG
500x500 mm	BV5050G	270 mm	80

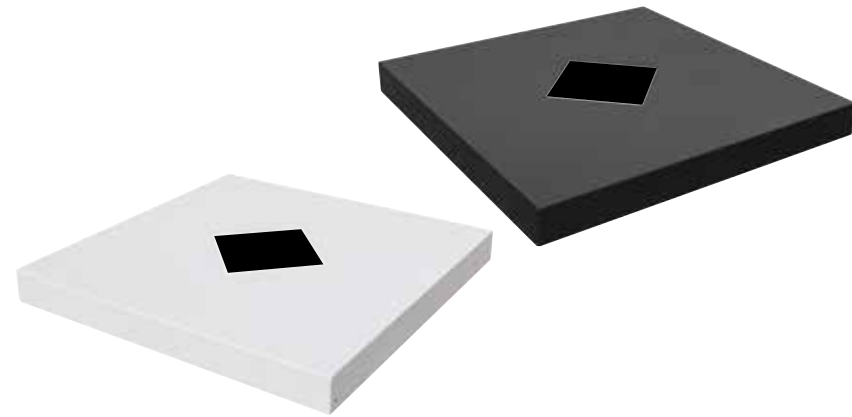


bv5050b

vaso in cemento bianco con maniglie - per ombrelloni a braccio
concrete white cement pot with handles - for cantilever parasols

	COD	H	KG
500x500 mm	BV5050B	270 mm	80

optional base



bdc8080

- carter acciaio zincato e verniciato a polveri
colori disponibili dark-starwhite.
- compatibile con base bud8080.
- zined and epoxy coated steel carter
- available colors dark-starwhite
- suitable for base bud8080

	COD	KG
870x870x12	BDC8080C	21
870x870x12	BDC8080W	21



bud8080

- base a croce metallica opzionale per
ombrellone a braccio
- da completare con 12 bc4040
(non comprese)
- optional cross metal base
for cantilever parasols
- to be completed with 12 bc4040
(not included)

	COD	KG
850 x 850	BUD8080C	32
	BUD8080W	

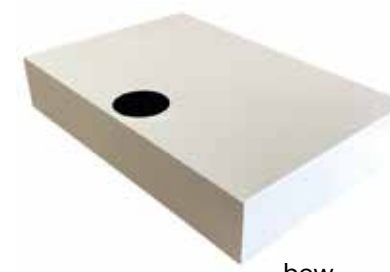


b8080r

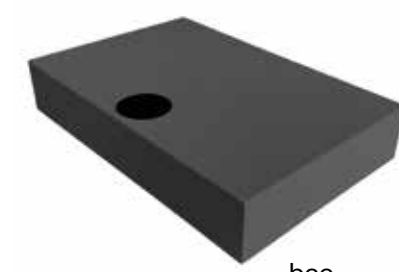
- kit ruote alta resistenza girevoli
e frenanti
- high resistance rotating and braking
wheels kit

COD
B8080R

carter



bcw



bcc

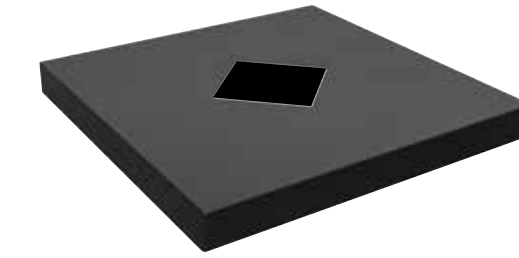
bcc/bcw

- carter acciaio zincato
e verniciato a polveri
- colori disponibili dark-starwhite.
- zined and epoxy coated
steel carter
- available colors dark-starwhite

	COD	KG
110x72x20	bcc	18
110x72x20	bcw	18



bdw



bdc

bdc/bdw

- carter acciaio zincato
e verniciato a polveri
- colori disponibili dark-starwhite.
- zined and epoxy coated
steel carter
- available colors dark-starwhite

	COD	KG
113x113x12	bdc	21
113x113x12	bdw	21

tessuti / fabric

a1s
acrilico dralon 350gr trattato, impermeabilizzato teflon. antimuffa. colore ecru. con volant.

a1n
acrilico dralon 350gr trattato, impermeabilizzato teflon. antimuffa. colore ecru. senza volant.

t2s
acrilico dralon 350gr trattato, impermeabilizzato teflon. antimuffa. colore terracotta. con volant.

t2n
acrilico dralon 350gr trattato, impermeabilizzato teflon. antimuffa. colore terracotta. senza volant.

t3s
acrilico dralon 350gr trattato, impermeabilizzato teflon. antimuffa. colore bordeaux. con volant.

t3n
acrilico dralon 350gr trattato, impermeabilizzato teflon. antimuffa. colore bordeaux. senza volant.

t6n
acrilico dralon 350gr trattato, impermeabilizzato teflon. antimuffa. colore grigio taupe. senza volant.

t7n
acrilico dralon 350gr trattato, impermeabilizzato teflon. antimuffa. colore bianco. senza volant.

t8n
acrilico dralon 350gr trattato, impermeabilizzato teflon. antimuffa. colore grigio perla. senza volant.

t9n
acrilico dralon 350gr trattato, impermeabilizzato teflon. antimuffa. colore grigio antracite. senza volant.

s1n
acrilico dralon 350gr trattato, impermeabilizzato teflon. antimuffa. colore nero. senza volant.

a1s
acryl dralon 350gr waterproof treated teflon. anti mould. colour ecru. with valance

a1n
acryl dralon 350gr waterproof treated teflon. anti mould. colour ecru. without valance

t2s
acryl dralon 350gr waterproof treated teflon. anti mould. colour terracotta. with valance

t2n
acryl dralon 350gr waterproof treated teflon. anti mould. colour terracotta. without valance

t3s
acryl dralon 350gr waterproof treated teflon. anti mould. colour bordeaux. with valance

t3n
acryl dralon 350gr waterproof treated teflon. anti mould. colour bordeaux. without valance

t6n
acryl dralon 350gr waterproof treated teflon. anti mould. colour grey taupe. without valance

t7n
acryl dralon 350gr waterproof treated teflon. anti mould. colour white. without valance

t8n
acryl dralon 350gr waterproof treated teflon. anti mould. colour silver grey. without valance

t9n
acryl dralon 350gr waterproof treated teflon. anti mould. colour anthracit grey. without valance

s1n
acryl dralon 350gr waterproof treated teflon. anti mould. colour black. without valance

350 gr/m² acrylic



tessuti speciali / special fabric

350gr/m² acrylic

gamma tessuti a richiesta
tessuto mano ombrellone.

fabric range on request
parasol fabric



	> 90%
	< 10%
	100%

i dati forniti, pur essendo frutto di misurazioni scientifiche condotte in laboratori certificati sono da ritenersi indicativi

the above mentioned data are indicative, although provided by scientific measurements performed in certified laboratories