

il laminato print hpl (high-pressure decorative laminates) identifica il laminato decorativo ad alta pressione, un pannello costituito da strati di fibre di cellulosa impregnati con resine termoindurenti sottoposti ad un processo ad alta pressione consistente nella applicazione simultanea di calore e pressione. ciò determina la fluidificazione e la contestuale policondensazione delle resine da cui risulta un materiale omogeneo, non poroso e con la finitura superficiale richiesta.

il laminato hpl è fornito sotto forma di pannelli, disponibili in diverse dimensioni, spessori e finiture superficiali. lo spessore nominale producibile va da 0.6 a 30 mm. essenzialmente il 60% del laminato hpl è costituito da carta, mentre il restante 40% è costituito da resine termoindurenti (resina fenolica per gli strati interni e resina melaminica per lo/gli strato/strati superficiale/superficiali). alcuni laminati hpl sono costituiti da strati metallici intercalati nel cuore del pannello, mentre talune tipologie hanno lamine di metallo o impiallaccature di legno come superficie decorativa.

#### finitura climb

opaca e profonda; una matericità basica, una increspatura leggera, piacevole e non invasiva che rievoca gli elementi naturali.

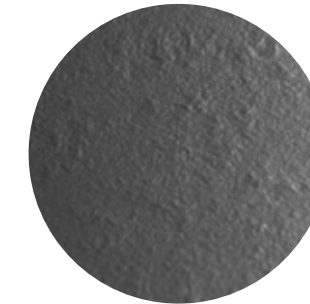
print hpl is a high-pressure decorative laminate, in other words a panel consisting of layers of cellulose fibres that are impregnated with thermosetting resins and subjected to a high pressure process consisting in the simultaneous application of heat and pressure. this causes at the same time the fluidization and polycondensation of the resins, resulting in a homogeneous, non-porous material with the required surface finish. hpl is supplied as panels, available in different sizes, thicknesses and surface finishes. the nominal thickness we produce ranges from 0.6 to 30 mm. basically, 60% of hpl consists of paper, while the remaining 40% consists of thermosetting resins, typically phenolic resin for the core layers and melamine resin for the surface layer(s). some hpl laminates have metal layers reinforced core, while others have metal foils or wood veneers as the decorative surface.

#### climb finishing

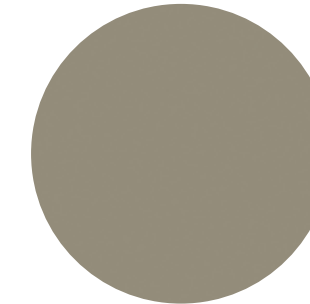
deep and opaque, the texture is slightly and pleasantly ribbed in a non-invasive manner that evokes natural elements.



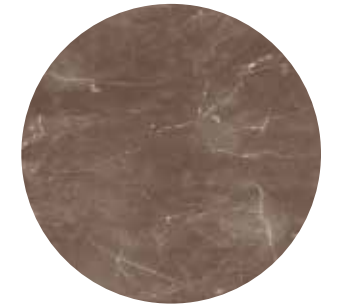
410  
bianco/white



421  
climb nero/climb black



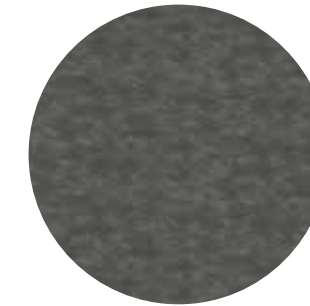
868  
climb grigio/grey



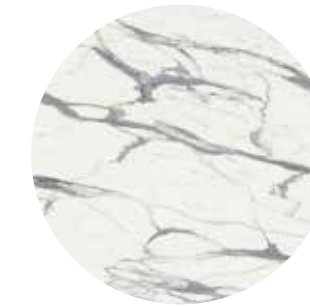
5555  
flamky botticino



596  
climb pietrogrado



545  
climb vulcano



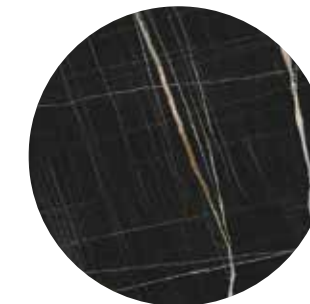
5547  
flamky statuario



2810  
climb cemento



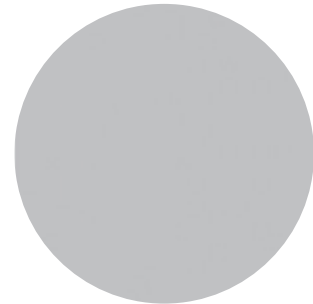
2811  
climb mongolia



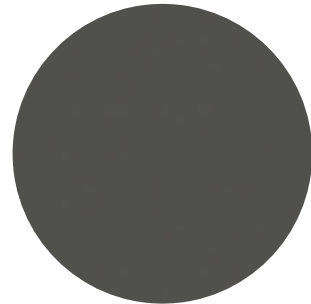
6084  
plus jazz



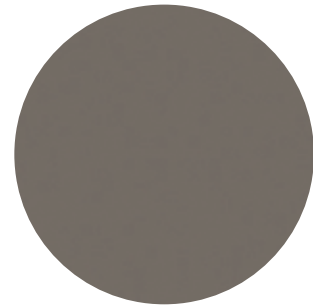
6076  
plamky impero



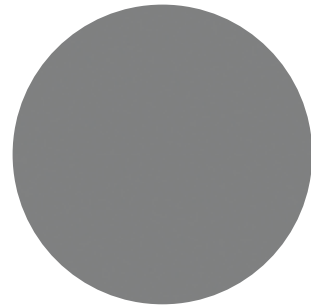
2903  
grigio perla/grey perle



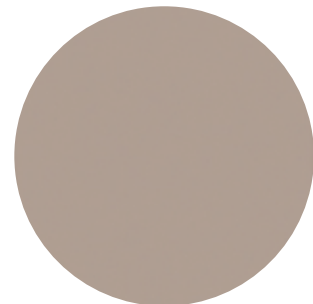
2905  
gris cosmique



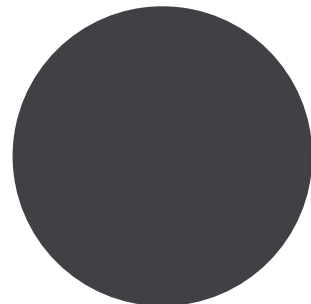
2906  
gris moyem



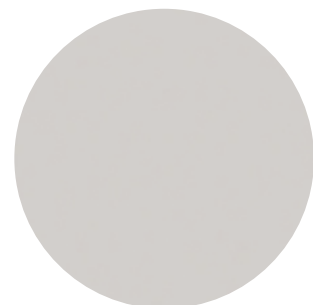
2907  
foncè



2908  
sahara



2909  
gris graphite



2910  
gris clair

polaris, come la luce confortante della stella polare, rappresenta un punto fermo, di arrivo, una superficie "altra", profonda e piena. il colore risulta "fondente", per un sicuro effetto innovativo e immaginifico. polaris è in testa ai prodotti di ultima generazione e costituisce un riferimento sofisticato e durevole per i progettisti più curiosi che desiderano una resa inedita.

like the comforting light of the north star, polaris, the "alternative", rich and deep surface represents a point of arrival. its mellow colour provides an undoubtedly innovative and imaginative effect. polaris leads the category of latest generation products, serving as a sophisticated and durable reference point for inquisitive designers who seek unusual results.

#### caratteristiche tecniche

caldo e vellutato al tatto - anti-impronta  
resistente ai graffi - resistente al calore  
resistente all'urto - antibatterico  
idoneo al contatto con gli alimenti

#### technical features

ultra warm and soft touch - anti-fingerprint  
scratch resistant - heat resistant  
shock resistant - anti bacterial  
suitable for applications in areas  
in contact with foodstuffs



inclinazione 25° / edge tilt 25°



bordo dritto / straight ahead



bussola / metal bush